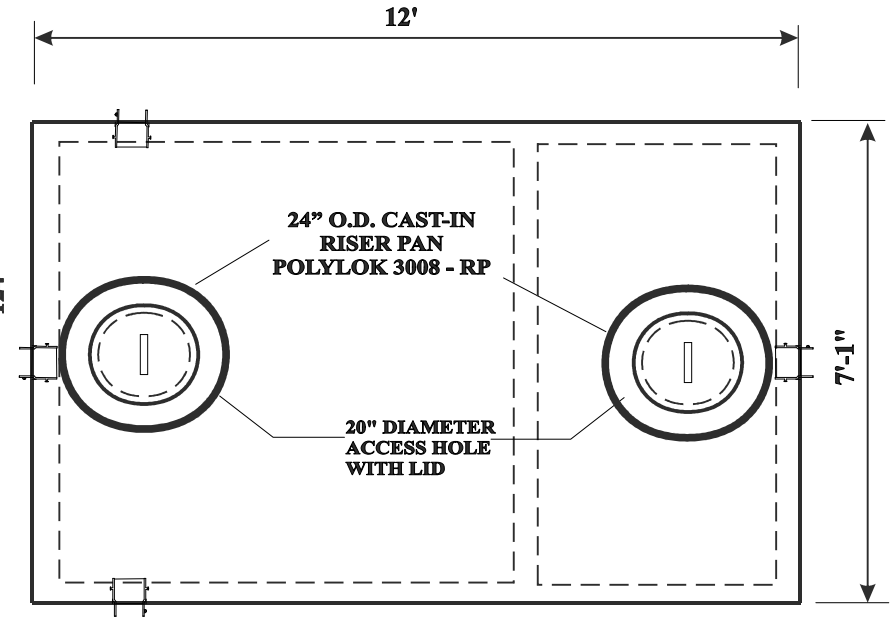
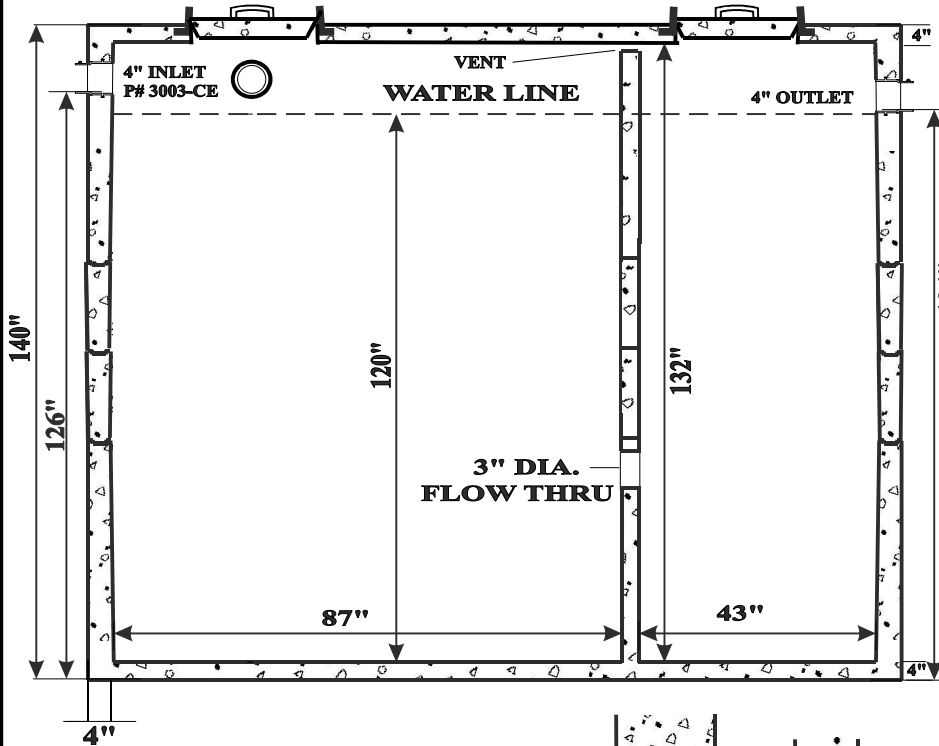


# 5000 GALLON

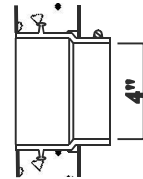
POLYLOK CAST IN RISER PANS



**POLYLOK 24" X 3" RISER PAN**

**1" x 1" BUTYL SEALANT**

**JOINT DETAIL**



**RUBBER BOOT DETAIL**

**4" BOOT STANDARD CAST-IN WATERTIGHT RUBBER BOOTS AVAILABLE IN 2", 4" AND 6" SIZES**

PROJECT		
CUSTOMER		
DRAWN BY		DATE
COST		
APPROVED BY		
DATE		

**VOLUME - CAPACITY:**

**FABRICATION SPECS:**

**LARGE CHAMBER SPECS:**

CAPACITY: 87" X 76" X 120" = 3435 GAL

GALLONS PER INCH = 28.6 GAL

**SMALL CHAMBER SPECS:**

CAPACITY: 43" X 76" X 120" = 1698 GAL.

GALLONS PER INCH = 14.14 GAL

OVERALL WEIGHT : 31,000 LBS.

TONGUE & GROOVE JOINT, SEALED WITH 1" X 1" BUTYL SEALEANT

STRUCTURAL FIBER REINFORCED CONCRETE - 5000 PSI

REINFORCEMENT - PROFIBER S PREMIERE STRUCTURAL FIBER



29150 C DRIVE NORTH, ALBION, MI 49224

PHONE: 517-629-4800 EXT:210